



ARTIC S3 CI HI WR HRO

HR179E

CE UNI EN ISO 20345:2012 S3 CI HI WR HRO SRC

SAFETY BOOT

39-47

HARD ROCK ANTISTATIC Durability

Calf safety boot, WRU anti-scratch back leather thickness 1,8-2,0 mm. Felt lining and tongue with antibacterial aluminium Wintherm® safety microfilm and ANTICOLD perspiring and abrasion resistant fur. Shoe with refracting fabric insert. Soft, lined and padded tongue.

OPENING BY ZIPPER

TOECAP 200J polymeric **composite non-thermic** according to EN 12568

MIDSOLE flexible antiperforation composite fabric according to EN 12568

SOLE HARD ROCK ANTISTATIC bidensity polyurethane and antistatic **RUBBER**.

Sole resistant to hydrocarbons and to abrasion, anti-shock and anti-slipping **SRC**

INSOLE 5000, three-materials extracomfort: perspiring, removable, anatomic, absorbing, ESD and anti-bacterial

CI cold insulation of sole complex - 30°C

HI heat insulation of sole complex

WR water resistant shoe

HRO resistance to hot contact of the outsole

Boot height sole included 23 cm

Size 39-47 Boot weight Sz 42 gr. 750

** The calculated weight excludes laces and insoles.*



AREAS OF APPLICATION

- Farming and Agriculture
- Cold Environments
- Construction and Building Sites
- Hydrocarbons and Chemicals
- Metal and Wood Carpentry

CERTIFICATIONS APPLIED

- +300°C** HRO Sole Resistance +300
- 30°C** CI Sole Resistance -30
- Slip Resistant Sole
- Heel Energy Absorption
- Hydrocarbon Resistance
- Water-Repellent Upper
- Water-Repellent Footwear
- Heat Insulating Outsole
- Cold Insulating Outsole

TECHNOLOGIES AND MATERIALS

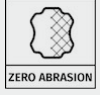
- No metal
- High Visibility
- Mondo Point 11
- Scratch-Resistant Leather
- Cold Insulating Upper

ANTI-SLIP RESULTS

**after simulation of walking by slight abrasion*

Ceramic tile floor with NaLS	Forward heel (heel slip 7°) <div style="display: flex; justify-content: space-between; border: 1px solid black; padding: 2px;"> ≥ 0.31 0.46 </div>	Backward heel (heel slip 7°) <div style="display: flex; justify-content: space-between; border: 1px solid black; padding: 2px;"> ≥ 0.36 0.53 </div>	Ceramic tile floor with glycerin	Forward heel (heel slip 7°) <div style="display: flex; justify-content: space-between; border: 1px solid black; padding: 2px;"> ≥ 0.19 0.20 </div>	Backward heel (heel slip 7°) <div style="display: flex; justify-content: space-between; border: 1px solid black; padding: 2px;"> ≥ 0.22 0.20 </div>
SRA on ceramic tile floor with NaLS	forward flat slip <div style="display: flex; justify-content: space-between; border: 1px solid black; padding: 2px;"> ≥ 0.32 0.40 </div>	Forward Heel forward flat slip (7°) <div style="display: flex; justify-content: space-between; border: 1px solid black; padding: 2px;"> ≥ 0.28 0.40 </div>	SRB on steel floor with glycerine	forward flat slip <div style="display: flex; justify-content: space-between; border: 1px solid black; padding: 2px;"> ≥ 0.18 0.22 </div>	Forward Heel forward flat slip (7°) <div style="display: flex; justify-content: space-between; border: 1px solid black; padding: 2px;"> ≥ 0.13 0.17 </div>

↳ PLUS



Scratch-Resistant Leather

Zero Abrasion technology uses leather finished with multiple layers of polyurethane to protect the upper from scratches, cuts, and wear. This solution ensures that the footwear maintains flawless performance and appearance even after months of intense use, providing advanced resistance against abrasive surfaces and mechanical environments—all while preserving foot comfort and breathability.



Cold Insulating Upper

Wintherm® technology combines two systems to provide cold protection without compromising comfort. The felt layer traps air inside the shoe, creating a natural insulating barrier. Together with an aluminum layer that reflects body heat inward, it maintains a stable temperature and reduces thermal loss even under extreme working conditions.

↳ SOLE

HARD ROCK ANTISTATIC Durability

The Hard Rock Antistatic PU line is designed to protect safety footwear in industrial environments where extreme temperatures and hazardous materials can pose serious risks to workers. The combination of an antistatic nitrile rubber sole and certified technical materials ensures reliable protection in high-risk settings. This line also features soft lines and lightweight volumes, offering a minimal design that prioritizes comfort and practicality without compromising safety.

