

**FRANKLIN** SB FO E PS CI HI WPA HRO SR

HRD052T

CE EN ISO 20345:2022 SB FO E PS CI HI WPA HRO SR

**LOW SAFETY SHOE**

**37-47**

**DIELECTRIC** Sole line

Low safety shoe, WRU suede back leather, toe in anti-scratch leather thickness 1,8-2,0 mm. Highly perspiring and abrasion resistant fabric lining. Soft, lined and padded tongue.

**COMPLETELY METAL FREE SHOE**

**TOECAP 200J** polymeric **composite non-thermic** according to EN 12568

**MIDSOLE flexible antiperforation composite INSULATING fabric** according to EN 12568

**SOLE HARD ROCK INSULATING** bidensity polyurethane and **INSULATING RUBBER** resistant to hydrocarbons and to abrasion, anti-shock and anti-slipping **SRC** Article HRD052T has been tested using a method analogous to ASTM F2413-24 (EH) and CSA Z195-14: determination of resistance to an electric shock, increase 1 kV/sec, voltage 20,000 V/60 Hz holding the voltage for 1 minute. Electrical current requirement below 1.0 mA.

The outsole of the footwear, within specific limits (in the absence of moisture, not referring to the upper), was tested using a method analogous to EN ISO 20345:2022 to provide electrical insulation against voltages up to 1000 V M ohm >1000.

(Test report No. 4325006.01/EA)

**DIELECTRIC INSOLE**, removable, anatomic, absorbing, insulating and perspiring

**FO** sole resistance to hydrocarbons

**E** energy absorption on seat region

**P** antiperforation midsole

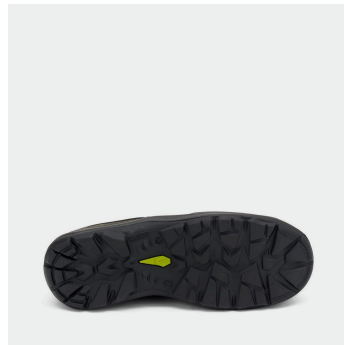
**HRO** resistance to hot contact of the outsole

**THIS PRODUCT COMPLIES WITH THE REQUIREMENTS OF THE STANDARD ASTM F2413-24:**

- Impact resistant footwear (I)
- Compression resistant footwear (C)
- Puncture Resistant Footwear (PR)
- Electric Hazard Resistant Footwear (EH)
- Slip Resistance (SRO)

**Size 37-47 Shoe weight Sz 42 gr. 600**

*\* The calculated weight excludes laces and insoles.*



↳ **AREAS OF APPLICATION**

 **Electrician**

↳ **CERTIFICATIONS APPLIED**

 **Water Penetration and Absorption (WPA)**

 **ASTM F2413-24**

 **Hydrocarbon Resistance**

 **PS Puncture Resistance with Non-Metallic Insert (nail Ø 3.0mm)**

 **Slip Resistant Sole**


 **Puncture-Resistant Plate**

 **HRO Sole Resistance +300**

 **Heel Energy Absorption**

 **Insulation up to 20,000V**

↳ **TECHNOLOGIES AND MATERIALS**

 **No metal**

 **Metal-Free**

 **Mondo Point 11**

 **Slip Resistance (optional glycerin test)**

↳ SOLE

## DIELECTRIC Sole line

Dielectric sole line was developed to meet the needs of those working in contact with electrical cables and systems. Specifically, this line offers a safety shoe with an insulating sole that provides specific protection against the risk of electric shock.

This is made possible by a series of insulating materials specifically designed for this purpose: the nitrile rubber compound of the outsole, the polyurethane foam of the midsole, the fabrics of the puncture-resistant insole, and the compound of the internal footbed.

These technologies enabled the shoes to pass electrical resistance tests in accordance with the analogous method of the EN ISO 20344:2021 standard and ASTM F2413 (EH) / CSA Z195-14 at 20 kV/60 Hz.

In addition, the specific materials used in the sole construction allowed the product to obtain the important American certification ASTM 2413-24 EH (Electric Hazard Resistant Footwear).

